

About **Atlas of U.S. Presidents**



The material contained within this program is based on the book ***Atlas of the Presidents*** by Donald E. Cooke, published by Hammond Incorporated

Maps, historical data, and presidential images provided by **Hammond, Inc.** 515 Valley Street, Maplewood, NJ 07047 201/763-6000.

White House cut-away licensed from and copyrighted by **The White House Historical Association** (740 Jackson Place, N.W. Washington, D.C. 20503, 202-737-8292); Photograph by the **National Geographic Society**.

Additional photographs courtesy of the **National Parks Service**.

The video contained within this program was compressed using **SUPERMAC CINEPAK™** video-compression technology.

Images of the First Ladies provided and copyrighted by **The White House Historical Association**; Photographs by the **National Geographic Society**.

Elizabeth Kortright Monroe	Artist unknown; courtesy of Thomas J. Edwards and William K. Edwards.
Louisa Catherine Johnson Adams	By Gilbert Stuart; White House Collection, acquired in 1971.
Julia Gardiner Tyler	By Francesco Aneilli; White House Collection, acquired in 1869, presented to the Executive Mansion by Mrs. Tyler.
Mary Elizabeth Taylor	Daguerreotype by J.E. McClees; Smithsonian Institution.
Harriet Lane	By John Henry Brown; National Museum of American Art, Smithsonian Institution.
Eliza McCardle Johnson	By Byrd Venable Farioletti; after a photograph; Smithsonian Institution.
Julia Dent Grant	Photograph by Mathew Brady; Library of Congress.
Lucy Ware Webb Hayes	By Daniel Huntington; White House Collection, acquired in 1881.
Lucretia Rudolph Garfield	Photograph by Mathew Brady; Library of

Ellen Lewis Herndon Arthur	Congress. Photographer unknown; Library of Congress.
Frances Folsom Cleveland	By Anders L. Zorn; National Portrait Gallery, Smithsonian Institution.
Caroline Lavinia Scott Harrison	By Daniel Huntington; White House Collection, acquired in 1894.
Ida Saxton McKinley	By Emily Drayton Taylor; White House Collection, acquired in 1968.
Edith Kermit Carow Roosevelt	By Theobald Chartran; White House Collection, acquired in 1902.
Helen Herron Taft	By Bror Kronstrand; White Huse Collection, acquired in 1943.
Edith Bolling Galt Wilson	By Adolpho Muller-Ury; White House Collection, acquired in 1963.
Florence Kling Harding	By Philip de Laszlo; White House Collection, acquired in 1924
Grace Anna Goodhue Coolidge	By Howard Chandler Christy; White House Collection, acquired in 1924.
Lou Henry Hoover	By Richard M. Brown, after Philip de Laszlo; White House Collection, acquired in 1950.
Anna Eleanor Roosevelt	By Douglas Chandor; White House Collection, acquired in 1965.
Elizabeth Virginia Wallace Truman	By M. Greta Kempton; White House Collection, acquired in 1967.
Mamie Geneva Doud Eisenhower	By Thomas E. Stephens; White House Colletion, acquired in 1961.
Jacqueline Lee Bouvier Kennedy Onassis	By Aaron Shikler; White House Collection, acquired in 1971.
Cludia Taylor (Lady Bird) Johnson	By Elizabeth Shoumatoff; White House Collection, acquired inn 1968.
Patricia Ryan Nixon	By Henriette Wyeth Hurd; White House Collection, acquired in 1981.
Elizabeth Bloomer Ford	By Felix de Cossio; White House Collection, acquired in 1985.
Rosalynn Smith Carter	By George Augusta; White house Collection, acquired in 1985.
Nancy Davis Reagan	By Aaron Shikler; White House Collection,

acquired in 1989.

Additional images of the First Ladies are provided and copyrighted by the following individuals and organizations:

Abigail Smith Adams	Artist unknown; provided by New York State Historical Association, Cooperstown, NY 13326.
Martha Jefferson Randolph	By Joseph Boze; provided by Diplomatic Reception Rooms, U.S. Department of State, Washington, DC 20520. note: Jefferson's daughter. No portrait of any kind has survived of her mother.
Hannah Hoes Van Buren	Artist unknown; provided by Martin Van Buren National Historic Site, National Park Service, Kinderhook, NY 12106.
Anna Tuthill Symmes Harrison	By Cornelia Stuart Cassady; provided by President Benjamin Harrison Memorial Home, 1230 North Delaware Street, Indianapolis, IN 46202.
Sarah Childress Polk	By George P. A. Healy; provided by James K. Polk Memorial Association, P.O. Box 741, Columbia, TN 38402.
Jane Means Appleton Pierce	Photographer unknown; provided by New Hampshire Historical Society, 30 Park Street, Concord, NH 03301.
Mary Todd Lincoln	Photograph by Mathew Brady; provided by Lloyd Ostendorf Collection, 225 Lookout Drive, Dayton, OH 45419.
Ellen Louise Axson Wilson	By Robert Vonnoh; Woodrow Wilson House Museum, a property of the National Trust for Historic Preservation; provided by Jay: Leviton-Atlanta, 1271 Roxboro Drive, N.E., Atlanta, GA 30324.
Abigail Powers Filmore	Artist unknown; provided by Buffalo and Erie County Historical Society, 25 Nottingham Court, Buffalo, NY 14216.
Dolley Payne Todd Madison	By Gilbert Stuart; Pennsylvania Academy of the Fine Arts, Philadelphia, PA, 19104.
Martha Dandridge Washington	By Charles Willson Peale; The Mount Vernon Ladies' Association of the Union, Mount Vernon, VA 22101.

Rachel Donelson Jackson

By Louisa Catherine Strobel; Ladies' Hermitage Association, Hermitage, TN 37076.

Letitia Christian Tyler

Artist unknown; reproduced by permission of John Tyler Griffin, great-great-grandson of Letitia and President Tyler.

Barbara Pierce Bush

Photograph by David Valdez, The White House.

Hillary Rodham Clinton

Official White House photograph.

Library of Congress Cataloging in Publication Data

Cooke, Donald Ewin, 1916-

Atlas of the Presidents.

Includes index.

Summary: Brief biographies of the United States Presidents with related historical data.

1. Presidents-United States-Biography.

[1. Presidents] I. Title.

E176.1.C79 1985 973.0992 [B] [920]

85-733

ISBN 0-8437-1045-4

The materials on this disc are copyrighted. Copying (except for personal archives), modifying or transferring the materials is prohibited and a violation of the copyright law.

©Copyright 1994, Applied Optical Media Corporation



SuperMac Technology
215 Moffett Park Drive
Sunnyvale, CA 94089
Phone: (408) 541-6100
Facsimile: (408) 541-6150



Cinepak video compression is SuperMacs advanced software video CODEC technology that enables each video frame to occupy a fraction of the usual storage space, while retaining highly accurate colors and excellent image quality.

Close

Dr. Brett Skolnick
Director - Cerebral Blood Flow Lab
Department of Neurology
Graduate Hospital of Philadelphia

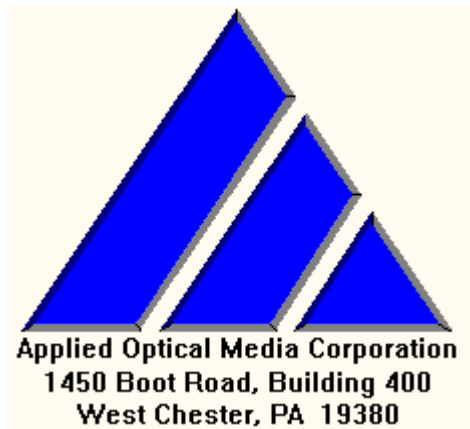
Dr. John H. Rorke

Karen L. Manning, R.T.



Applied Optical Media Corporation
1450 Boot Road, Building 400
West Chester, PA 19380

John Brown
Paul Dellevigne
Kris Vollrath
Gail Smith
Joe Pezzimenti
Yang Wang
Carrie Jenkins Martin
Michelle Hornbach
Kathy Smith
Laura Roderer



John Brown

Paul Dellevigne

Kris Vollrath

Gail Smith

Joe Pezzimenti

Yang Wang

Carrie Jenkins Martin

Michelle Hornbach

Kathy Smith

Laura Roderer

Copyright ©1993 Applied Optical Media Corporation

This program, and all ancillary materials that came with it, are copyrighted. You are granted the right to view these works, so long as you don't
BLAH...BLAH...BLAH...BLAH...

Presidential Facts List

About

This option allows you to select a president from a list sorted by Ancestry, Date of Birth, Place of Birth, Date of Death, State Elected From, Age at Inauguration, Political Party, Occupation Prior to Politics, or Religion of a president to view facts that are pertinent to that president.

Basically...

selecting **Ancestry** will sort the list of presidents based on their ancestry. Select a president from the list to go to the [Facts Screen](#).

selecting **Birth Date** will sort the list of presidents based on their date of birth. Select a president from the list to go to the [Facts Screen](#).

selecting **Birth Place** will sort the list of presidents based on their place of birth. Select a president from the list to go to the [Facts Screen](#).

selecting **Date of Death** will sort the list of presidents based on the date of their death. Select a president from the list to go to the [Facts Screen](#).

selecting **Elected From** will sort the list of presidents based on the state from which they were elected. Select a president from the list to go to the [Facts Screen](#).

selecting **Inauguration Age** will sort the list of presidents based on their age at their inauguration. Select a president from the list to go to the [Facts Screen](#).

selecting **Political Party** will sort the list of presidents based on their party affiliation. Select a president from the list to go to the [Facts Screen](#).

selecting **Prior Occupation** will sort the list of presidents based on their occupation prior to entering politics. Select a president from the list to go to the [Facts Screen](#).

selecting **Religion** will sort the list of presidents based on their religious affiliation. Select a president from the list to go to the [Facts Screen](#).

selecting the **President** button will reorder the list alphabetically by the last name. Select a president from the list to go to the [Facts Screen](#).

For help with Printing and navigating, see...[Navigation Bar](#)

This is a list of the presidents in alphabetical order by their last names. To select more than one president, click on more than one name. Each highlighted name will have printed all the information you have selected in the check boxes to the right.

To return, click anywhere.

This is a list of the presidents in alphabetical order by their last names. To select more than one president, click on more than one name. Each highlighted name will have printed all the information you have selected in the check boxes to the right.

To return, click anywhere.

This is a list of the presidents in alphabetical order by their last names. To select more than one president, click on more than one name. Each highlighted name will have printed all the information you have selected in the check boxes to the right.

To return, click anywhere.

This is a list of the presidents in alphabetical order by their last names. To select more than one president, click on more than one name. Each highlighted name will have printed all the information you have selected in the check boxes to the right.

To return, click anywhere.

This is a list of the presidents in alphabetical order by their last names. To select more than one president, click on more than one name. Each highlighted name will have printed all the information you have selected in the check boxes to the right.

To return, click anywhere.

This is a list of the presidents in alphabetical order by their last names. To select more than one president, click on more than one name. Each highlighted name will have printed all the information you have selected in the check boxes to the right.

To return, click anywhere.

This is a list of the presidents in alphabetical order by their last names. To select more than one president, click on more than one name. Each highlighted name will have printed all the information you have selected in the check boxes to the right.

To return, click anywhere.

This is a list of the presidents in alphabetical order by their last names. To select more than one president, click on more than one name. Each highlighted name will have printed all the information you have selected in the check boxes to the right.

To return, click anywhere.

This is a list of the presidents in alphabetical order by their last names. To select more than one president, click on more than one name. Each highlighted name will have printed all the information you have selected in the check boxes to the right.

To return, click anywhere.

Presidential Facts

About

This screen displays the facts about the chosen president.

Basically...

to page through the presidents in the chosen order, use the **Previous President** or **Next President** buttons in the top-right corner of the facts window.

to compare specific information with other presidents, choose the button for that topic.

For example, if you are viewing George Washington and you would like to compare the ages of other presidents at their inaugurations, choose the Age at Inauguration button. The list of presidents is displayed, ordered by Age at Inauguration.

For help with Printing and navigating, see...[Navigation Bar](#)

First Lady Screen

About

Once a first lady is chosen, you will see a picture of the first lady and have the option of reading a biography and going to the President screen.

Basically...

To read a brief biography, press the **Biography** button.

To go to the president, press the **President** button.

To page through the first ladies in the chosen order, use the **Previous First Lady** or **Next First Lady** buttons.

For help with Printing and navigating, see...[Navigation Bar](#)

The article window is the long window on the left side of the screen. This is where the text of an article appears, along with the embedded supporting objects. Within the text, there are words which appear in a red; these are glossary terms within the body of the article text. If you do not know the meaning of a particular word, and it appears in red, click on the word and its definition will appear in the reference window at the bottom right of the screen. If a search was done, and you chose this article from the articles in the search list, the word or words that you searched on will appear in the text with a gray background; this makes it easier to find them when you are reading the article.

To return, click anywhere.




The object window is the window at the top-right of the screen. This is where the embedded supporting objects appear. If the object is a video or an audio piece, a stop button will appear to the left of the window; pressing this button will stop playback of the object.

To return, click anywhere.

The reference window is the window at the bottom-right of the screen. This window serves three functions; it is where the glossary terms specific to the current article appear, it is where the medical terms specific to the current article appear, and it is where cross-referenced articles appear. What is displayed in this window is determined by the button beneath the window.

To return, click anywhere.

Embedded supporting objects are images, sounds, narrated slide shows, narrated animations, and video clips which appear next to appropriate areas of article text. A icon will appear in the left margin of the article. Each icon depicts a different object as follows:

-  - an image object.
-  - a sound object.
-  - an animation, slide show, or video object.

Clicking on the icon of an object will cause the object to play in the object window.

To return, click anywhere.

The control buttons are the Prev (previous) and Next buttons, and the Stop button which appear in between the article window and the object window. The Prev and Next buttons move you up and down the articles within a subject, respectively. The Stop button stops playback of the current animation, slide show, or video clip.

To return, click anywhere.

First Ladies List

About

From this option you can choose a first lady from a list of all the first ladies ordered either chronologically (by term) or alphabetically (by last name).

To select a first lady, first choose the order in which you would like them sorted. Chronological order is the default.

- If you choose to order the list chronologically, select the appropriate time period by pressing one of the buttons at the right of the list, then select a first lady from the list. You will then be taken to the First Lady Screen.
- If you choose to order the list alphabetically, select the appropriate name range by pressing one of the buttons at the right of the list, then select a first lady from the list. You will then be taken to the First Lady Screen.

Click here for more information on the [First Lady Screen](#).

Maps Screen

About

Once a president is chosen, you will see a historical map showing highlights of his presidency, with major achievements in his life, as well as situations arising during his political career, depicted.

Basically...

to page through the presidents in the chosen order, use the **Previous President** or **Next President** buttons on the menu bar at the bottom of the map.

to go to the President Screen, press his name in the **Navigation Bar**.

to hide the menu bar at the bottom of the map, click the left mouse button anywhere within the map; again to show the menu bar.

For help with Printing and navigating, see...Navigation Bar



Atlas of U.S. Presidents



[Overview of Atlas of U.S. Presidents is new in this version?](#)

[What](#)

The Main Menu

- ▶ [Presidents](#) Button
- ▶ [First Ladies](#) Button
- ▶ [Maps](#) Button
- ▶ [Facts](#) Button
- ▶ [Symbols](#) Button
- ▶ [Name that...](#) Button

Help on the [Navigation Bar](#)

[Questions and Answers](#)

Presidents List (Maps)

About

From this option you can choose a president from a list of all the presidents ordered either chronologically (by term) or alphabetically (by last name).

To select a president, first choose the order in which you would like them sorted. Chronological order is the default.

- If you choose to order the list chronologically, select the appropriate time period by pressing one of the buttons at the right of the list, then select a president from the list. You will then be taken to a historical map.
- If you choose to order the list alphabetically, select the appropriate name range by pressing one of the buttons at the right of the list, then select a president from the list. You will then be taken to a historical map.

Click [here](#) for more information on the Historical Map.

Presidents Game - Name that...

About

This is the game section of the program. To begin the game, select Name that...**President**, **Vice-President**, or **Term of Office**.

Once you have chosen a subject, a presidents image will appear in the window. You must select one of the six answers at the bottom of the screen (hopefully the correct one!) before time runs out. The meter to the left of the image shows the remaining time.

To stop the game, choose the **STOP Game** button from the navigation bar.

To see the list of high scores, choose the **Score** button.

For help with Printing and navigating, see...[Navigation Bar](#)

Program Navigation

About

The Atlas of U.S. Presidents uses a navigation bar at the top of each screen which allows you to move from screen to screen.

Basically...

selecting **Main** takes you to the Main Menu from any point in the program.

selecting **Back** takes you to the Previous screen.

the center of the navigation bar has either information about where you are in the program, or the name of a president. Selecting this button when it is not gray will take you to the president screen.

selecting **Print** displays the print dialog box.

selecting **Help** puts you in the area of the help system that is specific to where you are in the program.



The output selection dialog box has two output buttons; printer and clipboard.

Basically,...

the Printer button allows you to send the programs information to your printer. A second dialog box will appear which will allow you to choose what item(s) you would like to print and for which president(s).

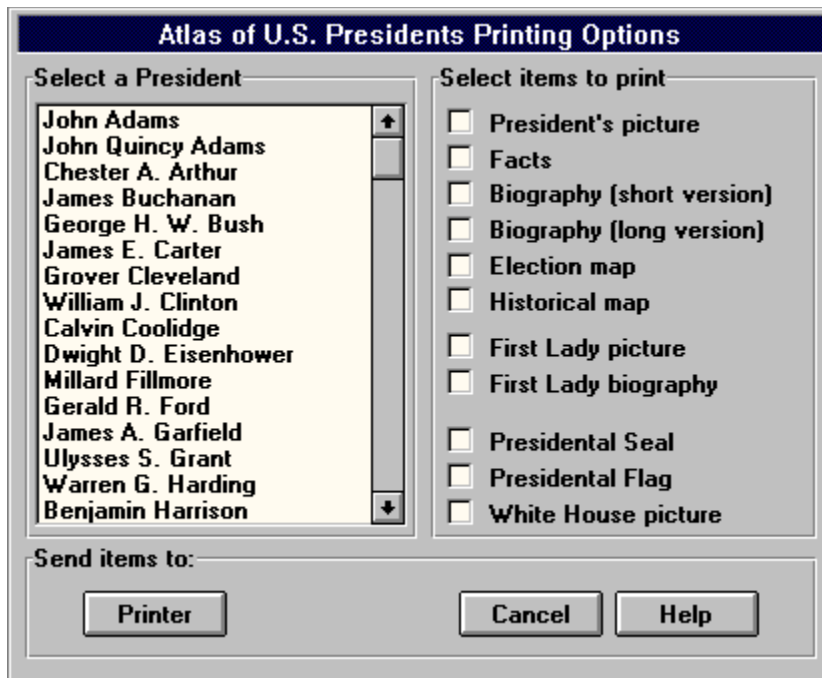
the Clipboard button allows you to send the programs information to the Windows clipboard for use with your other programs. Based on where you are in the program, the item(s) sent will change. For example, if you are viewing a presidents history and you choose to send it to the clipboard, the text of that screen will be available to other programs. Another example would be if you are viewing a first lady image and you choose to send it to the clipboard, the bitmap of that first lady will be available to other programs.

A few words about retrieving information from the clipboard

About

- Retrieving text (facts, long and short biographies, or first lady biography) is relatively straight forward - from within your word processor or text editor, choose its Paste function and the text will be inserted into the currently open document.
- Retrieving images (president picture, election map, highlight map, first lady picture, the seal, the flag or the white house) is a little trickier...your word processor or text editor needs to support the insertion of images (bitmaps) from the clipboard. This is usually implemented with the Paste Special edit function of the program. Using this function, the bitmap will be inserted into the currently open document. This may not always be the case, so check with your word processors manual/help system to see if you can use bitmapped images.

To see the Paste Special edit function used, Run Windows Write after sending an presidents picture to the clipboard and retrieve it using **Edit-Paste Special** and choose **Bitmap**.



This option allows you to send the programs information to your printer. You may choose multiple items, as well as multiple presidents.

This is a list of the presidents in alphabetical order by their last names. To select more than one president, click on more than one name. Each highlighted name will have printed all the information you have selected in the check boxes to the right.

To return, click anywhere.

Checking this box will send a picture to the printer for the selected president(s).

To return, click anywhere.

Checking this box will send a page of facts to the printer for the selected president(s).

To return, click anywhere.

Checking this box will send the short biography to the printer for the selected president(s).

To return, click anywhere.

Checking this box will send the long biography to the printer for the selected president(s).

To return, click anywhere.

Checking this box will send election map to the printer for the selected president(s).

To return, click anywhere.

Checking this box will send the historical map to the printer for the selected president(s).

To return, click anywhere.

Checking this box will send a first lady picture to the printer for each of the selected presidents wife.

To return, click anywhere.

Checking this box will send a first lady biography to the printer for each of the selected presidents wife.

To return, click anywhere.

Checking this box will send the Presidential Seal to the printer.

To return, click anywhere.

Checking this box will send the Presidential Flag to the printer.

To return, click anywhere.

Checking this box will send the White House picture to the printer.

To return, click anywhere.

Use this button to send the information to the printer, once you have selected the items and presidents.

To return, click anywhere.

Use this button to cancel the print operation.

To return, click anywhere.

Use this button to send the currently displayed information to the Windows clipboard for use with your other programs.

[A few words about retrieving information from the clipboard](#)

To return, click anywhere.

Program Overview

About

The Atlas of U.S. Presidents is broken into six separate sections, each covering a specific subject.

Basically...

selecting [Presidents](#) allows you to pick a president. A biography, an election map, facts, first lady information, a historical map, a brief history, and a speech are available for that president.

selecting [First Ladies](#) allows you to pick a first lady from a list of names to view her picture, read a short biography, or go to that president who had that first lady as his wife.

selecting [Maps](#) allows you to pick a president. Significant historic events about that president are presented through illustrated maps.

selecting [Facts](#) allows you to select a president from a list sorted by Ancestry, Date of Birth , Place of Birth , Date of Death, State Elected From, Age at Inauguration, Political Party, Occupation Prior to Politics, or Religion of a president to view facts that are pertinent to that president.

selecting [Symbols](#) allows you to select the Flag, the Seal, or the White House to view symbols that personify America's highest office; to select Song to discover the melody that is synonymous with the president; to select Oath to view actual video footage of a president taking the Oath of Office.

selecting [Name that...](#) allows you to test your knowledge on the presidents, their terms, and their vice-presidents in this fast-paced game.

selecting the [Print](#) button on the [Navigation Bar](#) from almost anywhere in the program will send information to the printer or clipboard.

selecting the Help button on the [Navigation Bar](#) from almost anywhere in the program gives assistance with or an explanation of any of the programs subjects.

Whats new...

About

Heres a list of the additions you asked for...

The 1992 election has been added, with pictures of Bill and Hillary Clinton.

The Oath of Office is now motion video.

Information can now be sent to the printer or Windows clipboard.

A game has been added to increase your knowledge of the U.S. Presidents.

New program graphics.

New navigational methods; get to the president information screen from virtually anywhere.

Buttons not available at certain times are ghosted.

Revised election maps; theyre easier to read.

Presidents List

About

From this option you can choose a president from a list of all the presidents ordered either chronologically (by term) or alphabetically (by last name).

To select a president, first choose the order in which you would like them sorted. Chronological order is the default.

- If you choose to order the list chronologically, select the appropriate time period by pressing one of the buttons at the right of the list, then select a president from the list. You will then be taken to the President Screen.
- If you choose to order the list alphabetically, select the appropriate name range by pressing one of the buttons at the right of the list, then select a president from the list. You will then be taken to the President Screen.

Click [here](#) for more information on the President Screen.

President Screen

About

Once a president is chosen, you will see a picture of the president and have the option of reading or hearing a biography and, if available, hearing a speech from that president, viewing a map of the highlights of his presidency, viewing a map of the states which he won during the election, and going to the First Lady screen.

Basically...

to read a brief biography, press the **Biography** button.

to read a detailed account of a president's history, press the **History** button.

to hear about the president and, if available, a speech, press the **Speech** button.

to view a historic map of his presidential years, press the **Historical Map** button.

to view the election results, press the **Election** button.

to see the First Lady's information, press the **First Lady** button.

to page through the presidents in the chosen order, use the **Previous President** or **Next President** buttons.

For help with Printing and navigating, see...[Navigation Bar](#)

This screen is a historical map showing highlights of his presidency, with major achievements in his life, as well as situations arising during his political career, depicted.

to page through the presidents, use the **Previous President** or **Next President** buttons on the menu bar at the bottom of the map.

to hide the menu bar at the bottom of the map, click the left mouse button anywhere within the map; again to show the menu bar.

To return, click anywhere.

This screen is an election map showing popular and electoral votes for each candidate who ran in the particular election.

to page through the presidents, use the **Previous President** or **Next President** buttons on the menu bar at the bottom of the map.

to hide the menu bar at the bottom of the map, click the left mouse button anywhere within the map; again to show the menu bar.


To return, click anywhere.


Questions & Answers

about common problems 

The following is a collection of situations and their remedies -

- I have the MediaVision Upgrade Kit, and...


when I try to install the program, I get an error like *Cant read drive X.....* 

I get an error like *Cant find one or more components.....* 

- I start the program and then I get the error *Video for Windows 1.1 Runtime cannot be found.....*



- I play the video in the program, and...

it plays to slow or it plays without the audio and video in sync..... 

The Problem: Returns error to Windows/Application stating file(s) cannot be found;
Displays a directory of the root of a CD when in a subdirectory; Sporadic errors when viewing files on the CD

The Solution: You need to have version 3.02 of the Trantor/MediaVision CD-ROM driver for single and double-speed NEC drives, 3.12 for the triple-speed NEC drives.

The Provider of the Solution: You need to contact MediaVision Tech Support and have the driver sent to you or download the driver from their BBS.

MediaVision Tech Support: 800.638.2807

MediaVision BBS: 510.770.0527 or

510.770.0968

Filenames: 302.EXE for driver version 3.02 (SE archive)

312.EXE for driver version 3.12 (SE archive)

The Problem: The program tried to initialize Video for Windows 1.1 when it started and did not find the necessary software needed to run the program.

The Solution: You need to install the Video for Windows 1.1 Runtime. This can be found on the CD-ROM in the RUNTIME directory. From Program Manager, or your program shell, choose **File**, then **Run** and enter **D:\RUNTIME\SETUP** and press Ok. (this assumes D: is your CD-ROM drive letter; if not, replace it with your letter)

The Provider of the Solution: AOMC on the program CD-ROM.

The requirements for video to run on a computer are numerous. Just because you have a fast processor, like a 80486 class, doesn't mean you will have smooth video playback. Video cards, and their drivers, play a big role in video playback. We have tried to provide video that will play back smoothly on the broadest base of computers, but there will always be some computers which will be insufficiently configured to play video. If you need more assistance, please read the VFW.WRI file in the WINVIDEO directory of your hard drive. This is Microsoft's knowledgebase on common problems and their solutions.

Symbols Screen

About

From this option, you may view the Presidential Flag, view the Presidential Seal, hear the Presidential Song *Hail to the Chief*, see the *Oath of Office*, or view the White House.

Basically...

to view the Presidential Flag, press the **Flag** button.

to view the Presidential Seal, press the **Seal** button.

to hear the Presidential Song *Hail to the Chief*,. press the **Song** button.

to see the *Oath of Office* taken by a president, press the **Oath** button; press the play button (▶) to begin the video and the pause button (⏸)

(⏸) to suspend the video. To re-play the video, press the **Oath** button again.

to view the White House, press the **White House** button; press the **Back** button to return to this menu.

For help with Printing and navigating, see...[Navigation Bar](#)

